

Introduction

What is XTC 2 Clip?

XTC 2 Clip is a specialized device for servicing HTC phones. It consists of a main device with a flex having a micro-SD emulator on its end.

Main functions:

- SIM unlock or lock a phone to a specified network with your own unlock code
- Change/repair IMEI (IMEI 2 for dual SIM phones)
- Change CID (Country ID used for firmware region lock)
- Change MEID (for CDMA area phones)
- Change security level (S-ON/S-OFF, allows you to run unsigned code, perform service actions, etc.)
- Many other functions you may need time-to-time

How does it work?

In order to use its functions – you have to connect it to the SD card port of your phone. The SD port may be located on the left, right or rear (battery) part of your phone. If your phone has no SD port – you must use Y-cable.



(PICTURE 1: Y-CABLE EXAMPLE)

Operation mode

There are two operation modes for XTC 2 Clip device:

- Direct – when the phone is in FASTBOOT mode & connected to the PC, using the XTC 2 Clip software
- Offline – when using a SIM Lock menu of bootloader. To use the offline mode you must first save special service files on XTC 2 Clip device.

Direct mode

To use direct mode:

1. Insert XTC 2 Clip device into phone SD card slot, power on phone into bootloader mode using “VOL-down + PWR” buttons. Select “FASTBOOT” option.

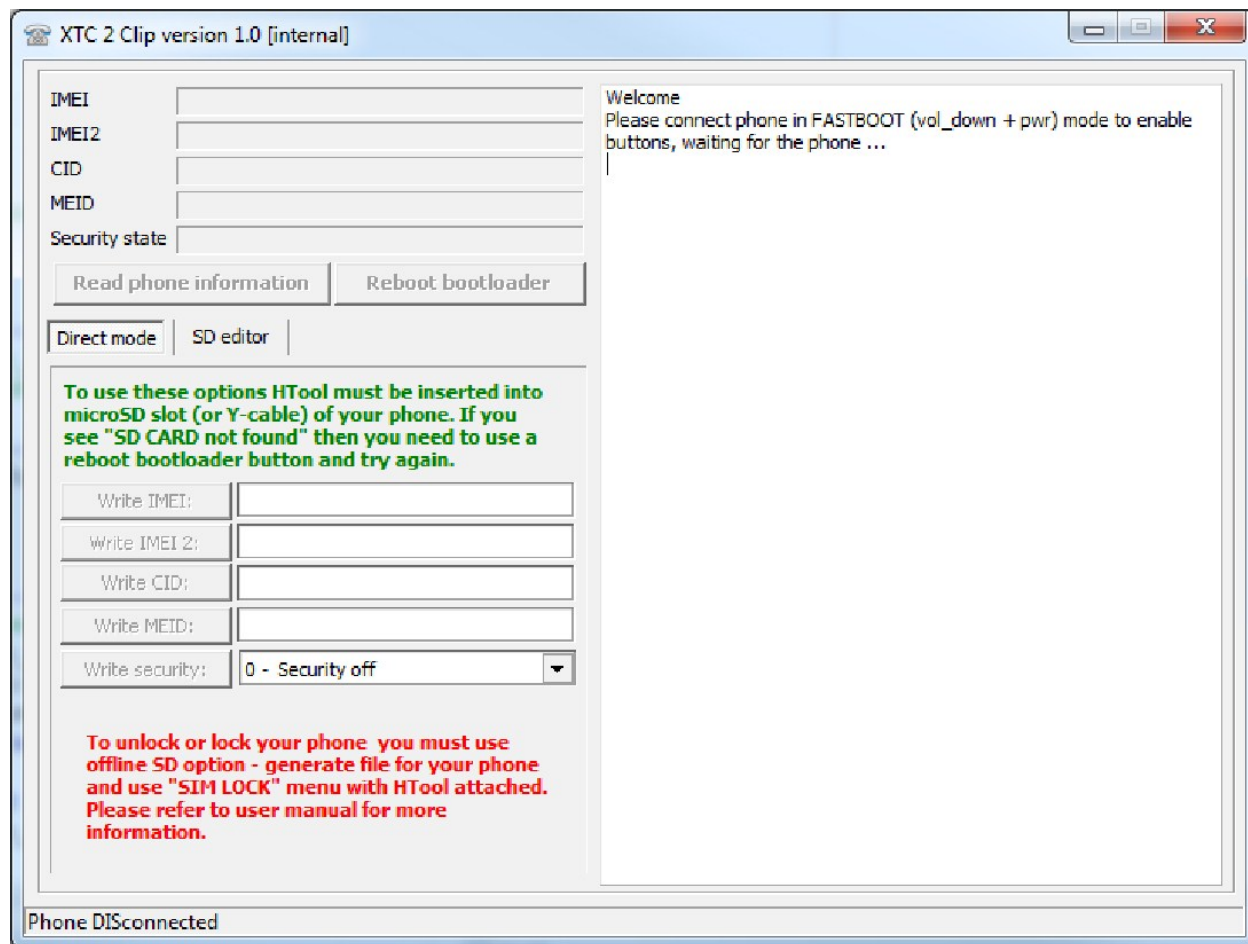
! IMPORTANT ! If your phone does not go to FASTBOOT mode, you probably have “Fast boot” mode enabled. To disable it – power on the phone in normal mode, go to “Settings” → “Power” and uncheck the “Fast boot” option

2. Connect phone to your PC.
3. Run the XTC 2 Clip software and select “Direct mode”.
4. Choose the desired operation and press corresponding button.

SIM LOCK FUNCTION IS NOT AVAILABLE IN DIRECT MODE! PLEASE USE OFFLINE MODE FOR SIM LOCK MANAGEMENT.

Important

IF YOU GET A ‘SD CARD NOT FOUND’ MESSAGE – IT MEANS THAT THE XTC 2 CLIP WAS CONNECTED AFTER PHONE WAS POWERED ON. IN THIS CASE, PRESS THE ‘REBOOT BOOTLOADER’ BUTTON AND REPEAT THE DESIRED OPERATION.



(PICTURE 2 - DIRECT MODE)

Offline mode

How to prepare service files on XTC 2 Clip device:

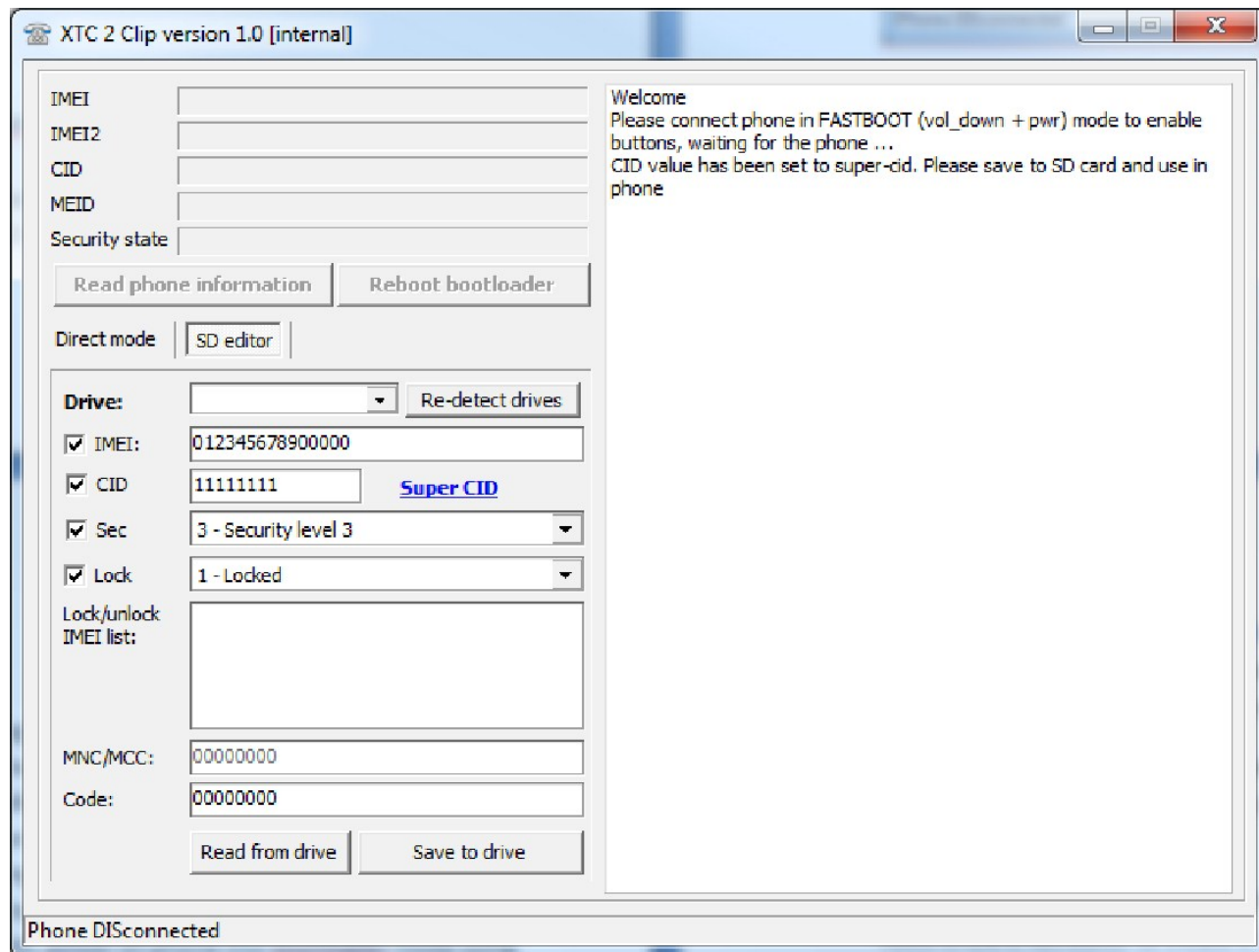
1. Connect the XTC 2 Clip device to your PC using any compatible micro-SD card reader.
2. The device will be detected as a flash/disk drive.
3. Run the XTC 2 Clip software and select "SD editor" tab.
4. If you have previously had your service files on your device, please press "Read from drive" button, otherwise you will lose all your existing files as soon as you press "Save to drive" button.
5. Select the options you need and press "Save to drive"
6. Insert XTC 2 Clip device into phone SD card slot, power on phone into bootloader mode using "VOL-down + PWR" buttons and select "SIMLOCK" option.

! IMPORTANT ! If your phone does not go to FASTBOOT mode, you probably have "Fast boot" mode enabled. To disable it – power on the phone in normal mode, go to "Settings" → "Power" and uncheck the "Fast boot" option

Important

THE SIM LOCK SETTINGS ARE BOUND TO THE PHONE'S IMEI. IN OTHER WORDS, IF YOU NEED TO LOCK/UNLOCK A PHONE, YOU MUST ADD PHONE'S IMEI TO SPECIAL 'CONFIG.DAT' FILE USING THE 'SD EDITOR' TAB. OTHERWISE YOU WILL GET 'IMEI CHECKING FAIL' AND YOUR PHONE WILL NOT BE UNLOCKED/LOCKED!

CID, IMEI, SECURITY FLAG SETTINGS ARE NOT BOUND, YOU CAN USE IT ON AS MANY PHONES AS YOU WISH WITHOUT HAVING TO CONNECT THE DEVICE TO PC EACH TIME.



(PICTURE 3 – SD EDITOR EXAMPLE)

Offline mode – manual files creation

It may happen that you need to create service files on a PC with no XTC 2 Clip software installed. In this case, you can manually create the files for:

- IMEI change/repair – imei.txt
- Security level change – sf.txt
- CID change – cid.txt

Please note, that unlike mentioned files, SIM lock configuration 'config.dat' is a binary file and you may need to use a hex editor to create it. Therefore, it is recommended that you use an XTC 2 Clip software to create/manage this file.

[TO CREATE/MODIFY THE FILES YOU CAN USE SIMPLE 'NOTEPAD' SOFTWARE](#)

IMEI file

To modify the phone's IMEI you need to create a text file called 'imei.txt' in the root folder of a XTC 2 Clip device disk drive. Once created, put inside a 14 digits of a new IMEI, for example: 12345678901234

SF file

To modify the phone's security level (S-ON/S-OFF) you need to create a text file called 'sf.txt' in the root folder of a XTC 2 Clip device disk drive. Once created, put inside a number that corresponds to the desire security level:

- 0 means security OFF (S-OFF)
- 1 means (S-ON level 1)
- 2 means (S-ON level 2)
- 3 means (S-ON level 3, highest)

CID file

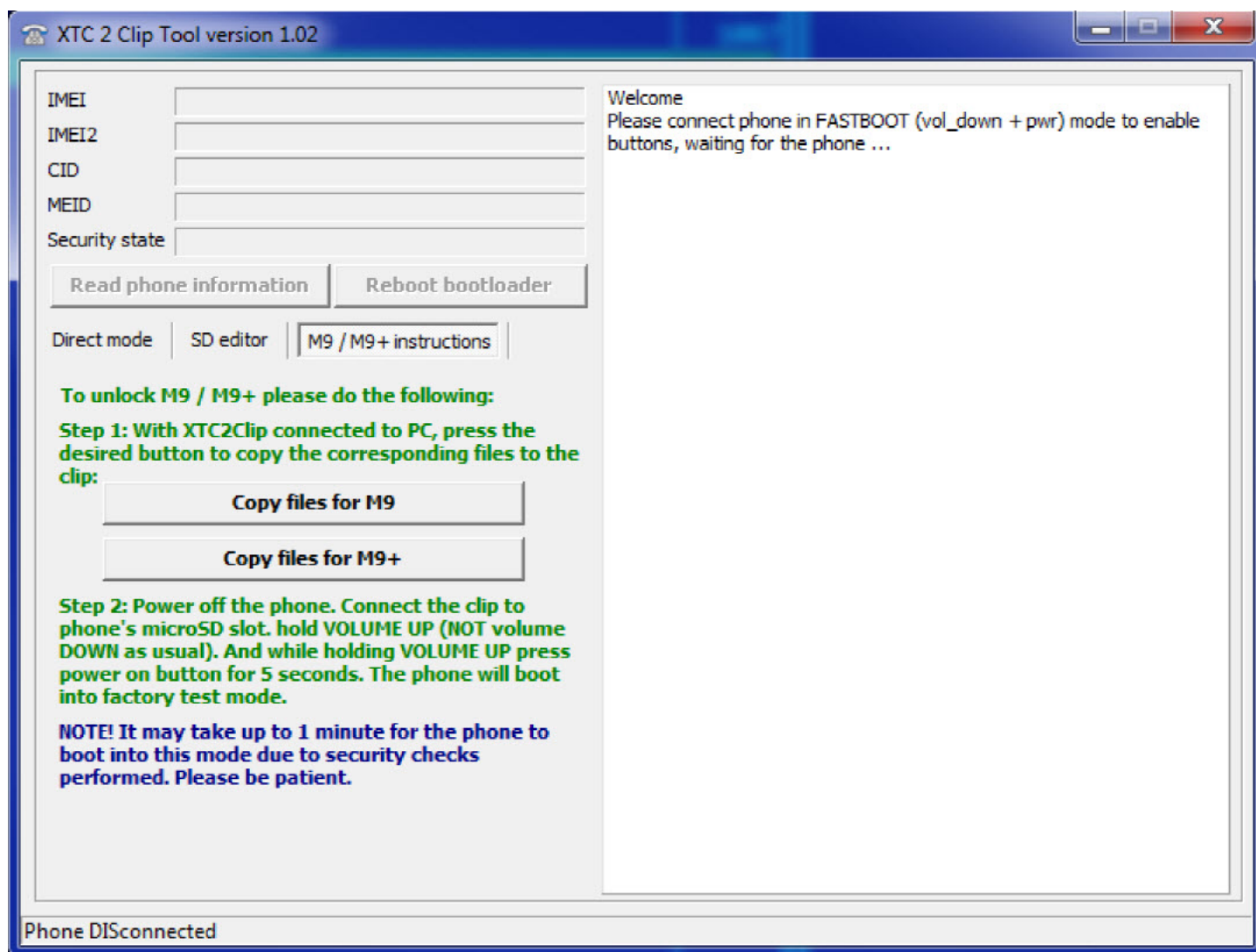
To modify the phone's CID you need to create a text file called 'cid.txt' in the root folder of a XTC 2 Clip device disk drive. Once created, put inside a 8 symbols of a new CID, for example: HTC_001

HTC M9 and HTC M9+ Special Instructions

Since the release of M9 HTC has changed the way to service phones. Although some commands are still available in "FASTBOOT" (now called "DOWNLOAD MODE"), service functions were moved to special "FACTORY MODE", which is accessible using VOL UP + POWER ON (NOT VOL DOWN as for FASTBOOT/DOWNLOAD MODE).

Warning! To be able to run the new factory mode you must have activated clip connected to the phone before trying to enter factory mode!

The following options are for unlock of M9 and M9+ and for IMEI repair on M9+ **only**.



To unlock M9 or M9+:

1. Copy files to clip using "Copy files for M9" or "Copy files for M9+" (if you have not done it earlier). You can have files for both M9 and M9+ at the same time.
2. Follow the steps from the M9 / M9+ instructions.

To repair IMEI on M9+:

1. Save "imei.txt" with the desired IMEI like usual using SD editor.
2. Copy files to clip using "Copy files for M9" or "Copy files for M9+" (if you have not done it earlier). You can have files for both M9 and M9+ at the same time.
3. Follow the steps from the M9 / M9+ instructions.

Supported models

XTC 2 Clip is supposed to support the whole range of HTC phones; however, the features may differ from model to model.

Below is the list of tested models (as per 1 June 2015):

- HTC M9
- HTC M9+
- Ace PVT
- Bliss
- Butterfly
- Butterfly 2
- Buzz
- ChaCha
- Desire 200
- Desire 300
- Desire 400 dual SIM
- Desire 500 dual SIM
- Desire 510
- Desire 526G+ dual SIM
- Desire 600 dual SIM
- Desire 601 dual SIM
- Desire 601 single SIM
- Desire 610 single SIM
- Desire 620 Dual
- Desire 620 Dual
- Desire 700 Dual
- Desire 816 dual SIM
- Desire 816 single SIM
- Desire 816G
- Desire 820
- Desire 820 Dual SIM
- Desire 820 Mini
- Desire 820S
- Desire 820U
- Desire 826W
- Desire C
- Desire Eye
- Desire SV
- Desire U dual SIM
- Desire V

- Desire X
- Droid Verizon
- E8 single SIM Sprint
- Icon G
- Legacy
- Legend
- Nexus 9
- One
- One E8 dual
- One E8 M8Sx Red
- One J (KDDI Japan)
- One M7
- One M8 dual SIM
- One M8 single SIM
- One Max
- One Mini
- One Mini 2
- One Remix Verizon
- One S
- One SV
- One V
- One X
- One XL
- Pico PVT
- Pyramid PVT
- Pyramid PG58100
- Pyramid PG58130
- Rider
- Rider 4G
- Saga
- Sensation (Pyramid)
- Sensation XL (X315e)
- Vivid
- Vivo PVT
- Vision

The list is not complete!